

Country Camping RV

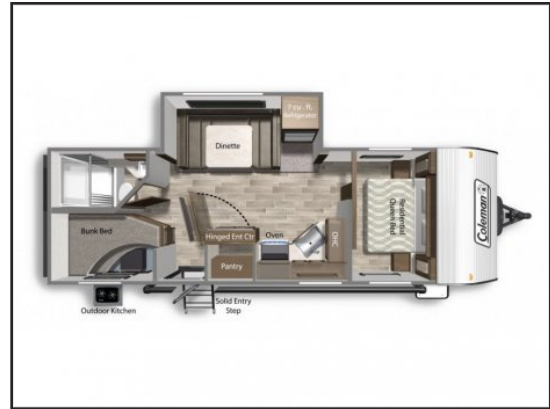
3101 10 Ave SW, Salmon Arm, BC, V1E 3K1

1 (888) 858-8594

2021 DUTCHMEN COLEMAN LANTERN 242BHWE

Type:	RV (Travel Trailer)
Colour:	WHITE
Interior:	IRONWOOD
Sleeps:	8
Slideouts:	1
LxWxH (ft):	n/a x 8 x 11
Weight (lbs):	7,600 (GVWR)
Stock #:	21N2071

See dealer for pricing details



FEATURES

- 2-Burner Cooktop (Select Models)
- 3-Burner Range Top
- 6 Gallon Gas/Water Heater
- Air Conditioning
- Awning
- Backup Camera Prep
- Bath/Galley Fan
- Bunk Beds
- Co2 Detector
- Easy Lube Axles
- Electric Stabilizer Jack
- Entry Handle
- Exterior Outlet
- Exterior Shower
- Fire Extinguisher
- Full Extension Drawer Guides Throughout
- High Capacity Furnace
- Ladder
- Lpg Detector
- **And more!**
- 20# LP Bottle
- 28
- 30 Amp Power Cord
- 7.0 Cubic Foot Double Door Refrigerator With Black Inserts
- Backup Camera Prep
- Bluetooth Enhanced Stereo W/DVD
- Diamond Etched Rock Guard
- Electric Tongue
- Exterior Entertainment Center
- Exterior Speakers
- Foot Pedal Flush Toilet
- Furnace
- Hard Valance Living Area
- Interior Speakers
- Living Area Exhaust Fan (Select Models)

COMMENTS: The iconic Coleman Lantern provides amenities and value beyond your imagination. Features such as; solid touch kitchen countertops, large picture windows to enjoy the great outdoors, and upgraded furniture focused on comfort. Plus, high-capacity holding tanks that extend your adventure make it clear why Coleman is the RV of choice for outdoor enthusiasts.

Coleman History

Coleman has a long history (well over 100 years) in the camping world. A name that is known and trusted in the outdoor industry, and Dutchmen is proud to manufacture Coleman RV's.

Powered Stabilizer Jacks & Power Tongue Jack

The Lanterns powered stabilizer jacks and power...

Prices are plus taxes, license, and a documentation fee.
Confirm all details and specifications with the dealer.

3101 10 Ave SW
Salmon Arm, BC, V1E 3K1

www.countrycampingrv.com
1 (888) 858-8594

