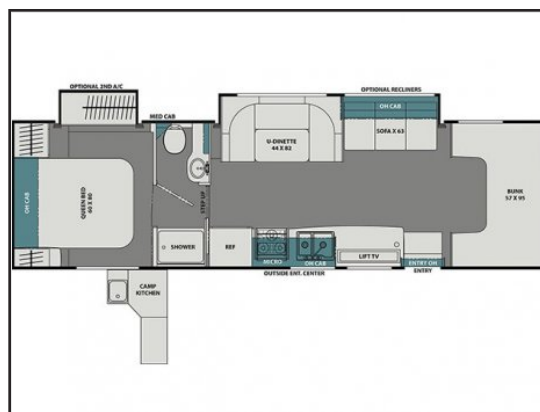


2021 COACHMEN LEPRECHAUN 319MBF

Type: RV (Class C Motorhome)
Colour: STARFIRE
Interior: HARBOUR MIST
Sleeps: 6
Slideouts: 2
LxWxH (ft): 33 x 8.4 x 11
Weight (lbs): 11,650 (GVWR: 14,500)
Tank (gallons): 50 (fresh), 32 (gray), 29 (black)
Engine: 6.8L 10 Cyl.
Stock #: RV5049
VIN: 50495049504950495



See dealer for pricing details

FEATURES

- Air Conditioning
- Awning
- Co2 Detector
- Exterior Entertainment Center
- Exterior Shower
- Fire Extinguisher
- Fire Extinguisher
- Fireplace
- Lpg Detector
- Microwave
- Oven
- Rear Back Up Camera
- Refrigerator
- Shower
- Side View Cameras
- Smoke Detector
- Spare Tire
- Television
- Toilet
- Trailer Hitch
- Water Heater

COMMENTS: ON ORDER...Seal Woodgrain, Electric Fireplace, Dual Recliners, Driver/Passenger Swivel Seats, Cockpit Folding Table, 15K BTU Low Profile Air Conditioner with Heat Pump, Spare Tire, Hydraulic Leveling Jacks, Auto Generator Start, 24 Inch LCD and DVD Player in Bedroom, Exterior Entertainment Centre, CRV Comfort Ride Premier: Bilstein Front Shocks, Adjustable Rear Air Bags, Stability Control, Dynamic Balanced Driveshaft System, Heavy Duty Front & Rear Stabilizer Bars; Premier Plus Package: Sideview Cameras, 6 Gal Gas/Electric Water Heater, Convection Oven, Heated Holding Tanks, Heated Remote Mirrors, Leatherette Cockpit Seats; Leprechaun Premier Package: Molded Fiberglass Front Wrap, Hi-Gloss Colour Infused HD Exterior Fiberglass, SS Wheel Liners, Solar Panel Connection Port, LP Quick Connect, Power Awning w/LED Lights, 7500 lb Towing Hitch, Onan 4.0kw Generator, Metal Running Boards, Slideout Awnings, Exterior Shower, Black...

Prices are plus taxes, license, and a \$499 prep fee.
 Confirm all details and specifications with the dealer.

44430 Yale Rd
 (PO Box 190)
 Chilliwack, BC, V2P 6J1



www.oconnorrv.com
1 (877) 912-3909