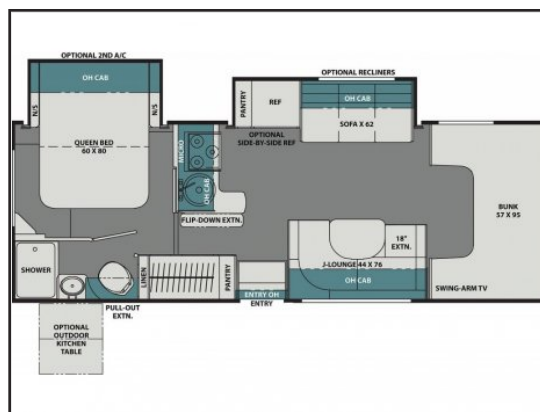


2021 COACHMEN LEPRECHAUN 260DSF

Type: RV (Class C Motorhome)
Colour: CARMEL
Interior: HARBOR MIST
Sleeps: 6
Slideouts: 2
LxWxH (ft): 27.5 x 8.4 x 11
Weight (lbs): 11,330 (GVWR: 14,500)
Tank (gallons): 50 (fresh), 31 (gray), 31 (black)
Engine: 6.8L 10 Cyl.
Stock #: RV5044
VIN: 50445044504450445



See dealer for pricing details

FEATURES

- Air Conditioning
- Co2 Detector
- Exterior Shower
- Fire Extinguisher
- Lpg Detector
- Oven
- Refrigerator
- Side View Cameras
- Spare Tire
- Toilet
- Water Heater
- Awning
- Exterior Entertainment Center
- Heated Mirrors
- Microwave
- Rear Back Up Camera
- Shower
- Smoke Detector
- Television
- Trailer Hitch

COMMENTS: ON ORDER...Seal Woodgrain, Dual Recliners, Side by Side Refer, Driver/Passenger Swivel Seats, Cockpit Folding Table, 15K BTU Low Profile Air Conditioner with Heat Pump, Spare Tire, Hydraulic Leveling Jacks, Molded Fiberglass Front Cap w/LED Strip Lights, Auto Generator Start, 24 Inch LCD and DVD Player in Bedroom, Exterior Entertainment Centre, CRV Comfort Ride Premier: Bilstein Front Shocks, Adjustable Rear Air Bags, Stability Control, Dynamic Balanced Driveshaft System, Heavy Duty Front & Rear Stabilizer Bars; Premier Plus Package: Sideview Cameras, 6 Gal Gas/Electric Water Heater, Convection Oven, Heated Holding Tanks, Heated Remote Mirrors, Leatherette Cockpit Seats; Leprechaun Premier Package: Molded Fiberglass Front Wrap, Hi-Gloss Colour Infused HD Exterior Fiberglass, SS Wheel Liners, Solar Panel Connection Port, LP Quick Connect, Power Awning w/LED Lights, 7500 lb Towing Hitch, Onan 4.0kw Generator, Metal Running Boards, Slideout...

Prices are plus taxes, license, and a \$499 prep fee.
Confirm all details and specifications with the dealer.

44430 Yale Rd
(PO Box 190)
Chilliwack, BC, V2P 6J1



www.oconnorrv.com
1 (877) 912-3909